



COLOSSUS

HARD WORK AT ANOTHER LEVEL



www.nexprotrucks.com

POWERFUL EQUIPMENT CUSTOMIZED BY APPLICATION



NEXPRO TRUCKS & EQUIPMENT CORP.

ABOUT

WE MAKE LIGHTER YOUR HEAVY WORK

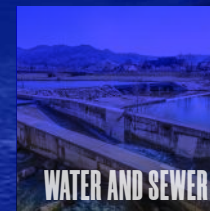
North American engineering and manufacturing company based in the city of Miami, with extensive experience in the design and integration of utility vehicles for different work areas, we constantly strive to innovate and offer specialized solutions for vehicles, adapted to different applications and industries.



CUSTOMER AND INDUSTRY TAILORED SOLUTIONS

COLOSSUS

Our COLOSSUS trucks are "special" not because they are different; they are special because they do the job you need them to do with greater efficiency, lower operating costs, less maintenance and more reliability than conventional equipment.



WATER AND SEWER



MUNICIPALITY



RAILWAY



ENERGY



FIREFIGHTERS



MILITARY

Efficiency, safety and sustainability of the operations that power the industry.

TRUCK BODY AND LIGHTING

1 Steel Platform

Fully reinforced 1/8" ribbed carbon-steel flatbed.



2 Protective Coating

Protective and anticorrosive synthetic spray liner applied according to customer specifications.

2

3 Tool Drawers

Located at the front, side, and bottom of the platform; each side made out of a 3/16" carbon steel sheet. Modifiable according to the customers



4 Signal and Work Lights

A wide variety of LED emergency and signaling lights as well as flood lights and spotlights are available for night operations.

4

COLOSSUS **ST** 26,000 lbs.
+ **XL** 35,000 lbs.



Our trucks are "special" not because they are different; they are special because they do the work you need with better efficiency, less operating costs, less maintenance and more reliability than the conventional equipment.

COLOSSUS

HYDRAULIC SYSTEM



2 Control Valves

Directional control valve body with a stop and relief valve.

1 Main Hydraulic Circuit

Is fed from the Truck's engine with a PTO and hydraulic pump. It operates at a flow of 12GPM and 2500 PSI. The Circuit includes a 20-gallon hydraulic oil tank with oil level sight glass, filler cap, oil filter in return line, and hydraulic oil cooling heat exchanger system.

3 Hose Reels

Up to three hose reels can be installed to power a variety of hydraulic tools.

Standard paired reel hoses are 50 feet long and 1/2" in diameter, rated for up to 3000 psi., 3/8" fixed end connections and SAE O-ring threaded with quick connects.



4 Power Take-off Unit

A PTO is coupled to a heavy-duty gearbox and activated from the Trucks cabin or the back end of the Truck.

5 Tandem Hydraulic Pumps

A double hydraulic pump body independently operates the hydraulic arm and hydraulic tools reel.

COLOSSUS

HYDRAULIC ARM

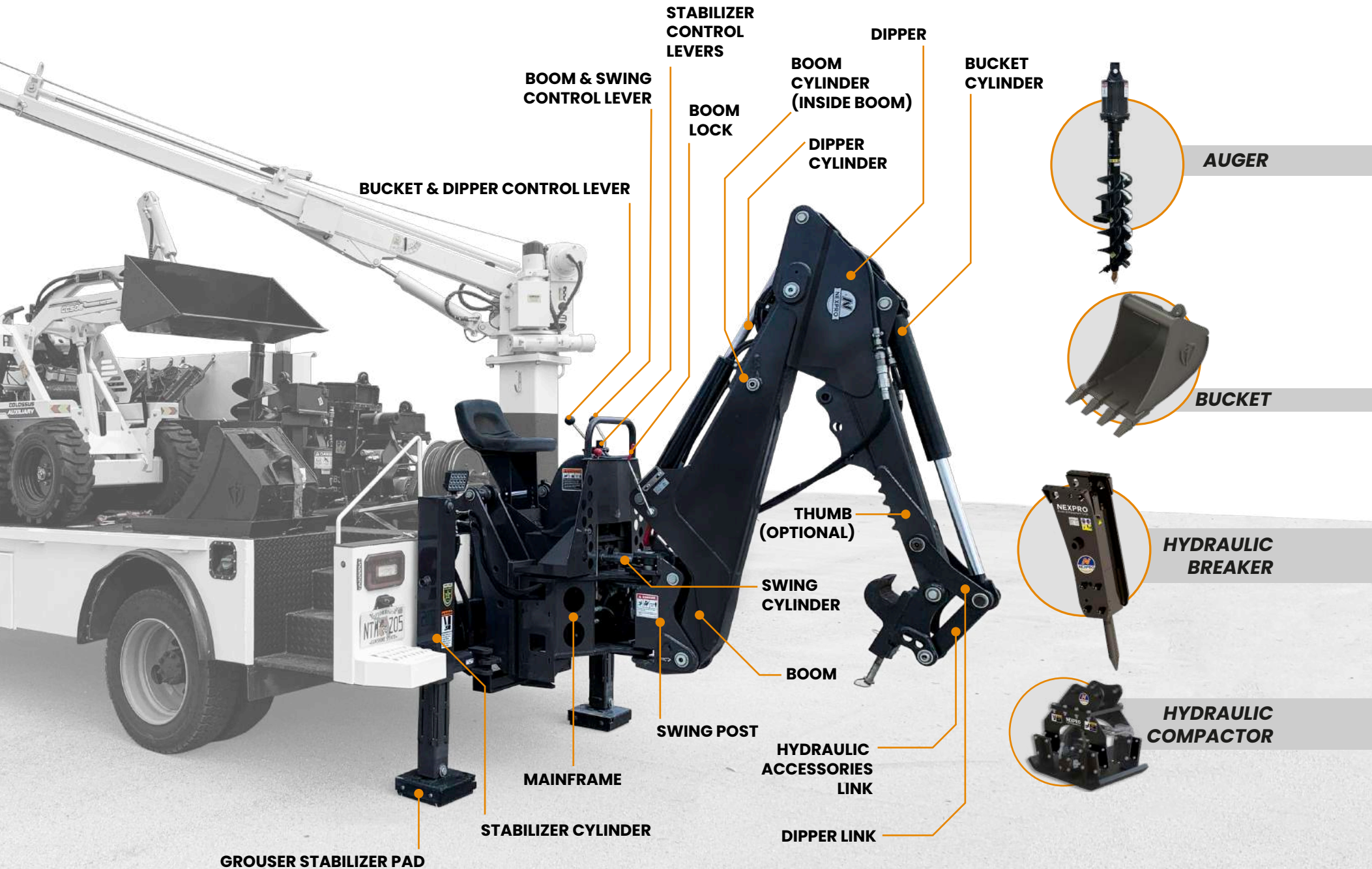
POWER DIG BUCKETS AND CAPACITIES

BUCKET SIZE	STRUCK CAP. FT ³	HEAPED CAP. FT ³	WEIGHT LBS	NUMBER OF TEETH
12"	1.43	1.83	125	3
16"	1.98	2.56	139	4
18"	2.25	2.98	147	4
20"	2.52	3.40	153	4
24"	3.07	4.32	170	5

5,676 lbs.
Max Digging Force

12" to 24"
buckets available

116"
Max Digging
Depth



WEIGHT	DIGGING DEPTH	ARM ROTATION	WORKING PRESSURE	FLOW SPECTRUM
1592 LBS.	6.5 FEET.	180 °	2450 PSI	9-14 GPM

Nexpro Trucks & Equipment Corp. reserves the right to change product specifications without notice. Photos and images may include optional.

COLOSSUS

HYDRAULIC BREAKER

The Hydraulic breaker mounted on the Colossus ST is ideal for jobs that require a high-impact capacity.

Provides the optimal combination of power and frequency. It is a safe and efficient solution for road maintenance, urban demolition, and restoration of buildings.

The tip can easily break concrete up to 10 inches thick and can be used in confined spaces that cannot be reached by larger breakers.

WORKING WEIGHT	IMPACT ENERGY CLASS
414 lbs.	350 ft. Lbs.
IMPACT RATE (BPM)	OPERATING PRESSURE
450 ~ 1150	1305 ~ 1885 (psi)
RELIEF PRESSURE	OIL FLOW RANGE
2320 ~ 2610 (psi)	6.6 ~ 11.9 (gal / min)
TOOL DIAMETER	PRESSURE LINE SIZE
2.15 (in)	12 (1/2) (mm (in))
CARRIER WEIGHT	MACHINE CLASS
4409 ~ 9921 (lb)	2-5 (mt)



**HAMMER
HYDRAULIC 250**



**HAMMER
HYDRAULIC 350**

COLOSSUS

HYDRAULIC COMPACTOR

The Colossus arm-mounted compactors provide the perfect combination of drive force and frequency, for trench management, and surface compaction needs.

Focusing on the needs of the contractor in road construction and repair, embankment preparation, utilities, and waste drainage excavation fill.

Helping as well with the special needs of placing of steel sheets, posts, and plates for the stabilization of the ground.

The Colossus ST compactor provides features to enhance compaction effectiveness as well as protect the owner's investment by limiting damaging forces resulting from the operation and hydraulic impulses.

The "outboard" shock isolator location provides stability for optimal drive transmission for adequate compaction.

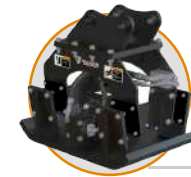
Shock isolators are angled to reduce damaging shear stresses in the isolator and extend service life while providing a performance advantage in delivering compaction forces to the ground.

The integral flow control block manages to flow and pressure to provide useful and repeatable compaction, as well as to protect the hydraulic motor.

The oil bath bearing design maximizes bearing life and minimizes maintenance needs.



**COMPACTOR
HYDRAULIC 250**



**COMPACTOR
HYDRAULIC 350**

IMPULSE FORCE	COMPACTION AREA	MOTHERBOARD WIDTH	MINIMUM CARRIER WEIGHT	MAXIMUM CARRIER WEIGHT	AGAINST MAXIMUM PRESSURE	
3400 (lbs.)	487.5 (in²)	18.75 (in)	5000 (lbs.)	14000 (lbs.)	250 (psi)	
VIBRATIONS PER MINUTE	OPERATING WEIGHT	MINIMUM FLOW	MAXIMUM FLOW	MINIMUM HOSE SIZE	MAXIMUM HOSE SIZE	MACHINE CLASS (MT)
2200 (vpm)	525 (lbs.)	12 (gpm)	25 (gpm)	1/2 in (in)	1/2 in (in)	3-8

GOLOSUS

ELECTRIC-HYDRAULIC CRANES

Max. Capacity

3,200 lbs.

Crane Rating

8,000 ft-lbs.

Max. Reach

14 ft

LIFTING CAPACITIES	CRANE RATING	MOUNTING SPACE	STOWED HEIGHT
3,200 lbs	8,000 ft-lbs	14" x 14"	26-5/8"
ROPE DIAMETER	LINE PULL SPEED		
1/4" @ 65'	17 ft/min (Single-line) - 7 ft/min (Double-line)		
MAX. SINGLE-LINE	MAX. DOUBLE-LINE	ROTATION	BOOM ELEVATION
1,600 lbs	3,200 lbs	360° Continuous	-8° to +75°
WEIGHT	POWER SOURCE		BATTERY CABLE
560 lb	Electric-Hydraulic (12V DC)		25 pies, calibre 2

POWERFUL DC ELECTRIC WINCH

The winches combine a powerful permanent magnet DC motor with robust sealing with proven 3-stage, all metal geartrain. Permanent grease lubrication means years of trouble-free service.



For the process of customization of your trucks we can offer a wide variety of brands, models and capacities of Electric Hydraulic Cranes. Depending on your needs we can outfit your truck with knuckle boom, telescopic, fully hydraulic or hybrid cranes with different settings and lifting capacities beginning at 2500 lbs.

8,000 ft-lb electric-hydraulic service crane with a 3,200 lb lifting capacity featuring a 12V DC electric winch, electric rotation, hydraulic boom elevation and extension.

COLOSSUS

MINI LOADER

We have designed and adapted the most versatile addition to work equipment; a skid steer. The many options and attachments available for this rugged piece of equipment make it the perfect complement to any and every job site.

CCS06 COLOSSUS AUXILIARY

Load capacity **551 lbs**



AVAILABLE WITH **GASOLINE OR DIESEL**
AVAILABLE ONLY **TIRES**

CCS07 COLOSSUS AUXILIARY

Load capacity **551 lbs**

*Oil filter and radiator options
available with upgrade*



AVAILABLE WITH **GASOLINE OR DIESEL**
AVAILABLE WITH **TIRES OR TRACKS**

CCS08 COLOSSUS AUXILIARY

Load capacity **749 lbs**

*Oil filter and radiator options
available with upgrade*



AVAILABLE WITH **GASOLINE OR DIESEL**
AVAILABLE WITH **TIRES OR TRACKS**

CCS08 COLOSSUS AUXILIARY REMOTE CONTROL

Load capacity **551 lbs**

*Remote control unit for special applications
and hazardous special applications
and hazardous environments*



DIESEL AVAILABLE
AVAILABLE ONLY **TRACKS**

COLOSSUS

ATTACHMENTS MINI LOADER

Not only can the skid steer be modified into many different machines; it also functions as an alternative hydraulic pump where other hand tools and equipment can be attached to work independently in confined or hard-to-reach areas.

The variety of options and attachments available to customize your skid steer makes it a must-have piece of equipment to equip on your Colossus truck.



BUCKET 4 EN 1



MIXER



TRENCHER



CLAW



AUGER



BUCKET FOR ROCKS

COLOSSUS

LIFT PLATFORM

As an independent installer, Nexpro Trucks & Equipment can offer the best solutions by designing engineered solutions for specific service bodies on the OEM chassis complemented by a wide variety of equipment options and accessories.

That's why it has designed for its COLOSSUS trucks a lifting platform to facilitate unloading and loading of the mini-loaders, so they can be carried on the truck.

PH: (786) 631 5922

PH: (786) 631 5922



COLLOSSUS
AUXILIARY

NEXPRO

MIAMI-DADE
COUNTY

YD24
TRAILWINDS

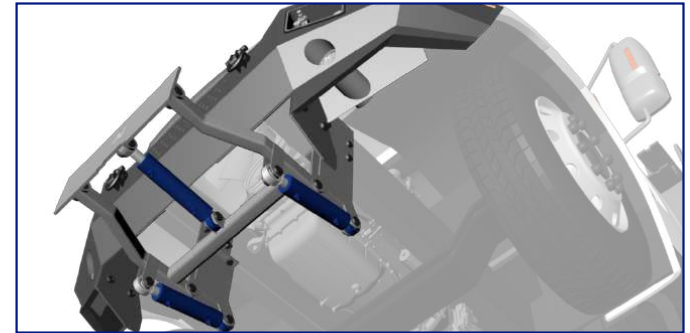
YD24

PM.V

COLOSSUS

FRONT BUMPER

Our certified engineering department utilized computer-aided design (CAD), along with the latest testing, including finite element analysis (FEA). The in-house prototyping, fabrication and painting department ensures an engineered solution for even the most complex needs.



WIDE VARIETY OF TOOLS, EQUIPMENT AND ACCESSORIES TO CUSTOMIZE YOUR TRUCKS



Nexpro Trucks & Equipment Corp. has a wide selection of additional attachments for your hydraulic boom. Along with the variety of hydraulic hand tools available to operate on one, two or three individual circuits, the Colossus trucks in their ST and XL configurations are better equipped to tackle any job. As a work truck, there is no more versatile and efficient truck to effectively perform and complete your job.

COLOSSUS

IT'S VERSATILITY

UNITS HYDRAULIC POWER UNITS

Power units are a perfect complement when the job site is removed from the truck and access is restricted. Power units are self-contained hydraulic units available in gasoline or diesel. These rugged units are easy to carry to a site and can power up to two hydraulic hand tools at the same time.



HP28

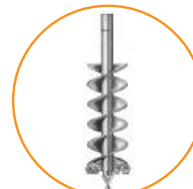


HP210

HYDRAULIC COMPLEMENTS



HDC HEAVY AUGER
FROM 6" TO 36



HTF MEDIUM AUGER
FROM 4" TO 36



HTF HEAVY AUGER
FROM 4" TO 36



HYDRAULIC QUICK COUPLER C&P#27



ROCK AUGER
FROM 6" TO 36



MDC HEAVY AUGER
FROM 8" TO 36



MTG BREAKER QUICK COUPLER SFB350 CP 027 QH

AUGER

COUPLERS

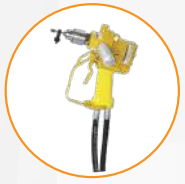
COLOSSUS

HYDRAULIC HAND TOOLS

IMPACT WRENCH PNEUMATIC



ID07



DL07



DRILL PNEUMATIC



REGULAR HD01

SAW



CO25

COMPACTOR



TA54

BREAKER PNEUMATIC



SUBMERSIBLE HD45

CONCRETE CUTTING SAW



DS06



DS11

ESMERIL



GR30



HGL80

BILGE PUMP



TP03



TP08

SUBMERSIBLE PUMPS



SM20



SM21

COLOSSUS

COMPLEMENTS

AIR COMPRESSORS / ELECTRIC GENERATORS



ALARMAS DE RESPALDO



BARRA DE LUCES



COCTELERA LED



LUCES PERIMETRALES



LUCES DE ÁREA



SISTEMAS DE CÁMARA DE REVERSA

AIR COMPRESSORS / ELECTRIC GENERATORS



COMPRESOR DE AIRE HONDA GAS SS3J5.5GH_WB IR MAX PRESS. 135 PSIG, 11,8 SCFM A 90 PSIG



COMPRESOR DE AIRE HONDA GAS 2475FIGH IR MAX PRESS. 175 PSIG, 24,3 SCFM A 90 PSIG



COMPRESOR DE AIRE DE ACCIONAMIENTO HIDRÁULICO RELIANT RC40 MAX PRESS. 175 PSIG, 30/40 SCFM



COMPRESOR DE AIRE DE ACCIONAMIENTO HIDRÁULICO RELIANT RS45 MAX PRESS. 150 PSIG, 30/35/40/45 SCFM PAQUETE PREMIUM



COMPRESOR DE AIRE DE ACCIONAMIENTO HIDRÁULICO RELIANT RS85 MAX PRESS. 150 PSIG, 60/70/80/85 SCFM



COMPRESOR DE AIRE, UNIDAD HIDRÁULICA DE POTENCIA Y GENERACIÓN MILLER ENPAK A60HGE 58 SCFM @ 100PSIG, 8 GPM @ 3000PSIG Y 6.000 VATIOS 120V / 60HZ

REEL



COLOSSUS ST

FIRST RESPONSE

26,000 lbs.

Chassis with a maximum gross vehicle weight rating (GVWR)
gross vehicle weight rating (GVWR)

A MID-SIZE TRUCK WITH THE POWER OF A HEAVYWEIGHT



COLOSSUS

FIRST RESPONSE

XL

HARD WORK AT ANOTHER LEVEL

35,000 lbs.

Chassis with a maximum gross vehicle weight rating (GVWR) gross vehicle weight rating (GVWR)





COLOSSUS

VALVE TRUCK

EFFICIENCY
IN MAINTENANCE
OF MUNICIPAL PIPELINES



SPECIALIZED IN VALVE MAINTENANCE



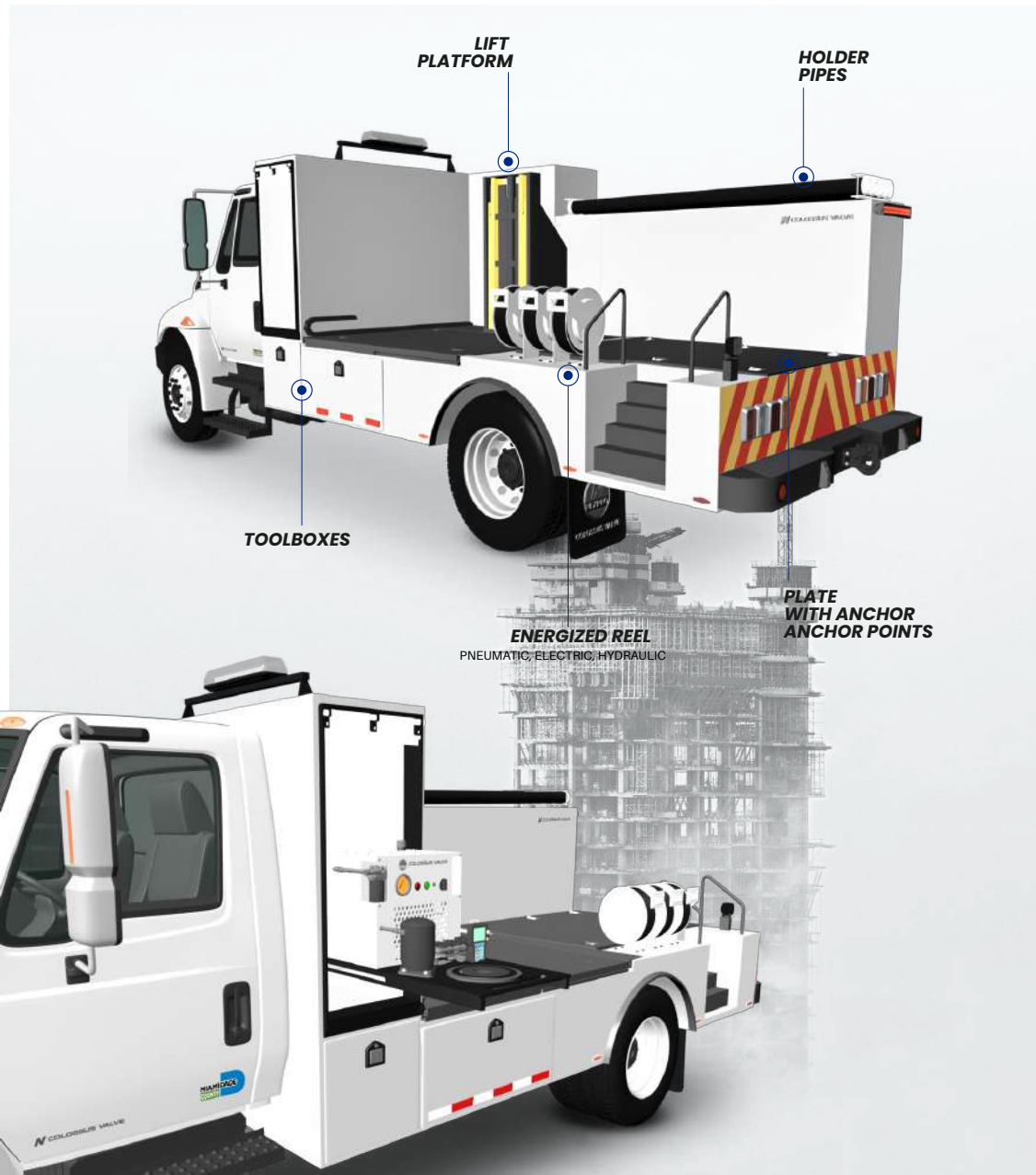
WACHS Tools

Colossus Valve is equipped with the best valve maintenance technologies. Wachs Tools is the first choice for municipal workers and industry professionals responsible for preserving and maintaining the valuable water infrastructure in this important industry.

- Steel A60 Galvanneal steel construction, (50% more corrosion resistant than competitors using A40 galvanneal).
- Body constructed of 14-gauge A60 galvanneal.
- Doors constructed of 16 and 16 gauge A60 Galvanneal.
- 16-gauge exterior panel. 16-gauge interior panel.
- Stamped wheel panel radius
- Clip style shelf adjustment brackets.
- Adjustable shelving constructed of 18-gauge G90-min G90-min galvanized material with 250-pound capacity.
- Cargo floor has 3/16" front crossmember and 1/4" rear crossmember.
- 2" structural steel floor reinforcement cross members.
- Cargo floor with 12-gauge stirrup.

COLOSSUS

VALVE TRUCK



TAILGATE

- 12 in (30.5 cm) high tailgate with 2-point paddle latch and stainless steel blind mount, protective reinforcement cover on cargo side and reinforced hinge design with ½ in (1.27 cm) stainless steel hinge pin.

BASIC BODY CONFIGURATION

- Compartment depth shall be 20". No offsets.
- Compartment height shall be 40".

LEFT SIDE OF BODY.

- First vertical measures 33.5" wide x 20" deep x 40" high.
- (1) Adjustable flat shelf.
- (1) Adjustable flat shelf with 5 dividers.
- Second vertical measures 24" wide x 20" deep x 40" high.
- (1) Adjustable flat shelf.
- Horizontal measures 49" wide x 20" deep x 19" high.

REAR BUMPER

- Perforated, illuminated and recessed bumper. Galvanned.

FRONT BUMPER

- Exclusive Master bumper with universal plate attachment and hydraulic actuators.
- Flexibility to attach hydraulic tools
- Two hydraulic connection ports for hydraulic tools and attachments.
- 120v power outlets (Available with electric power generation option)
- Pneumatic quick connects for pneumatic tools and compressed air applications (Available with air compression option)
- Storage compartments

CAB GUARD

- Warner perforated material cab guard is shipped loose.
- Bolt-on application.

LIGHTS

- Set of LED lights (S/T/T, reverse lights and marker lights are all LED).

PROTECTIVE COATING

- White powder coat paint floats.

BED LINER

- Box liner applied to cargo floor, sidewalls, inside of tailgate/mamper and upper parts of compartments.

COLOSSUS

PIPE LINER

MULTIPURPOSE
TO ANOTHER LEVEL



COLOSSUS

PIPE LINER



- Steel A60 Galvanneal steel construction, (50% more corrosion resistant than competitors using A40 galvanneal).
- Body constructed of 14-gauge A60 galvanneal.
- Doors constructed of 16 and 16 gauge A60 Galvanneal.
- 16-gauge exterior panel. 16-gauge interior panel.
- Rubber fenders installed
- Clip style shelf adjustment brackets.
- Adjustable shelving constructed of 18-gauge G90-min G90-min galvanized material with 250-pound capacity.
- Cargo floor has 3/16" front crossmember and 1/4" rear crossmember.
- 2" structural steel floor reinforcement cross members.
- Cargo floor with 12-gauge stirrup.

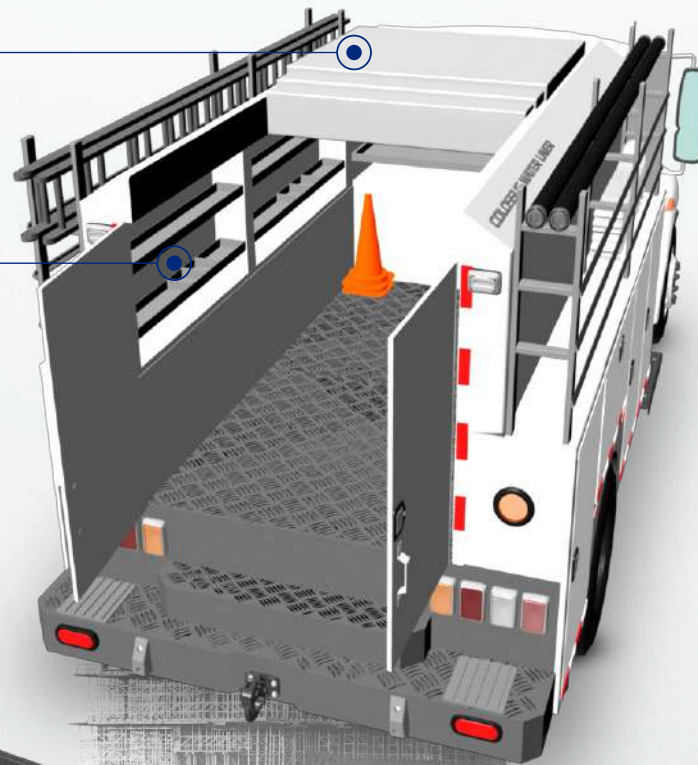
DOORS

- Steel A60 Galvanneal steel construction, (50% more corrosion resistant than competitors using A40 galvanneal).
- Body constructed of 14-gauge A60 galvanneal.
- Doors constructed of 16 and 16 gauge A60 Galvanneal.
- 16-gauge exterior panel. 16-gauge interior panel.
- Rubber fenders installed
- Clip style shelf adjustment brackets.
- Adjustable shelving constructed of 18-gauge G90-min G90-min galvanized material with 250-pound capacity.
- Cargo floor has 3/16" front crossmember and 1/4" rear crossmember.
- 2" structural steel floor reinforcement cross members.
- Cargo floor with 12-gauge stirrup.



SLIDING ROOF

**COMPARTMENT
WITH INTERNAL TRAY**



FUEL TANK

- Polished stainless steel fuel filler pocket with no cutouts and pocket that is shipped loose.

BASIC BODY CONFIGURATION

- Compartment depth shall be 20". No offsets.
- Compartment height shall be 40".

LEFT BODY SIDE

- First vertical measures 33.5" wide x 20" deep x 40" high.
 - (1) Adjustable flat shelf.
 - (1) Adjustable flat shelf with 5 dividers.
- Second vertical measures 24" wide x 20" deep x 40" high.
 - (1) Adjustable flat shelf.
- Horizontal measures 49" wide x 20" deep x 19" high.

SIDE RACKS

- Custom side-mount rack installed on each side on offset side of sidepack.
- Painted single-stage code black UD.
- Bolt on application.

FRONT BUMPER

- Unique Master bumper with universal plate attachment and hydraulic actuators.
- Flexibility to attach hydraulic tools
- Two hydraulic connection ports for hydraulic tools and attachments
- 120v power outlets (Available with electric power generation option)
- Pneumatic quick connects for pneumatic tools and compressed air applications (Available with air compression option)
- Storage compartments

REAR BUMPER

- Footboard, non-flush-mounted, non-illuminated bumper with 12" deep step.
- Warner bolt bracket installed.
- Second level step installed in middle of bumper vertically for access to cargo area.
- Class V hitch frame with 2" receiver tube integrated into bumper. Customer to weld to chassis frame.
- 2) D-rings installed.





COLOSSUS

HARD WORK AT ANOTHER LEVEL

8190 Commerce Way, Miami Lakes Florida 33016.
+1 (786) 631-5922 / +1 (786) 899-3976

www.nexprotrucks.com

